

**SMARTLINC**▶▶

*"...linking you to a smarter home"*



# HouseLinc™

Whole-House Automation  
and  
Home Theater Controller

Owner's Manual

#1101B

# Congratulations!

You've just purchased a powerful device that will give you powerful automatic and remote control of virtually everything electric or electrical in your house.

HouseLinc comes pre-programmed with the world's largest infrared control library right on-board. So setting up control of a home theater is simple. Further, it has 5 programmable infrared output zones which allow you to easily setup and control a wholehouse audio/video system.

With the use of SmartLinc ProbeLincs, HouseLinc is made aware of the On or Off status of a audio/video device and is capable of fully automating a home theater system. Add a HubLinc and HouseLinc can be "hardwired" to TouchLincs for virtually instantaneous touch-screen triggered output.

You can also control any of the 256 X-10 addresses on your homes AC wiring. With the assistance of 100's of products available through home automation and electrical distributors and retailers, you'll be able to control lighting, appliances, locks, window covering controllers, HVAC systems, security, sprinklers, systems and just about anything else you can imagine.

# Components

1) HouseLinc



2) Power Supply



3) PowerLine Interface (pictured below) and “phone” patch cord (Not Pictured).



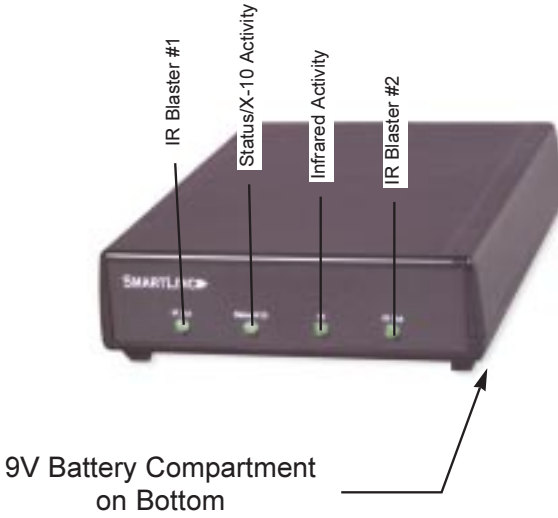
4) Serial “download” cable (Not Pictured).

5) SmartLinc Suite installations disks (3 disks - Not Pictured)

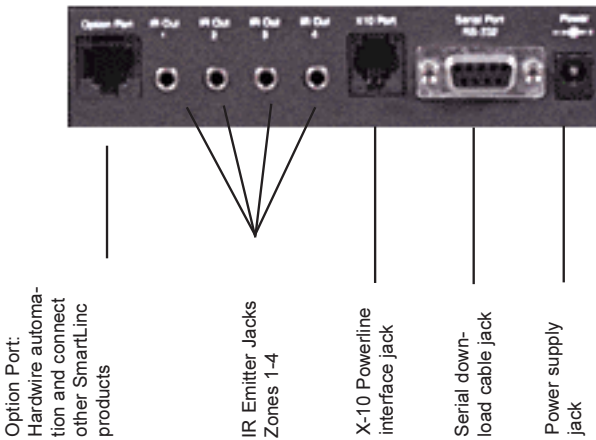
Notes: You will need need a 386 or better computer running Windows 3.1, Windows 95 or Windows 98 to program HouseLinc. Once programmed, HouseLinc is a fully functional stand-alone controller.

# HouseLinc

## Front View:



## Rear View:



# HouseLinc™ Basics

HouseLinc is a whole-house controller that controls X-10, infrared and other devices. With powerful, yet easy to use, software you can program elegant lighting scenes or helpful home theater events to occur at certain times of the day, in response to an X-10 signal, input from a RS-232 touchscreen or in response to input from the computer.

You can program hundreds of events into HouseLinc. Further, you can create “conditionals” (if-then logic) into your events if you desire.

This manual is designed to be a “quick-start” guide and to familiarize yourself with HouseLinc. Full, on-line help is available in the software.

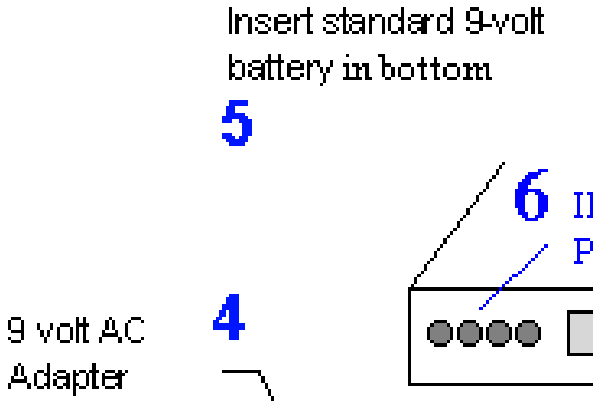
Please note: Plato HouseLinc and HouseLinc are synonymous.

## What You'll Need

1. The HouseLinc and enclosed components.
2. A 386 or better computer running Windows 3.1, Windows 95 or Windows 98.
3. A 9 pin COM port on your computer (for download and direct control only). If your computer only has a 25 pin port, you will need to acquire a 25 pin to 9 pin adapter.
3. Two standard 110V outlets at desired installation location.
4. X-10 compatible receivers if you wish to automate lighting, appliances or other similar accessories.
5. Infrared controllable devices if you wish to automate home theater or audio/video control.

# HouseLinc Hardware Installation

Make connections as per the following diagram:



1. Locate a free serial (COM) port: Consult the documentation that came with your PC. COM ports (either 9 or 25 pin connectors) are often labeled somewhere on the back of your PC. The label may read COMx where x is 1, 2, 3, or 4. Or, the label may read something like Serial Port x where x is 1, 2, 3, or 4. If the only free COM port on your computer is the 25 pin variety, you will need a 25 pin to 9 pin adapter widely available at most computer & electronics stores.
2. Plug one end of the enclosed download cable into the free COM port located in step one and the other end into the Serial Port on the back of HouseLinc.
3. Plug the AC Adapter into a standard 110V wall outlet or powerstrip and into the power jack on the back of HouseLinc.  
**(Note: If you are connecting three or more BOBs to a HouseLinc, you will need to use an 800 mA power supply (SmartLinc part #8025)).**
4. The green "Status/X10" LED on the HouseLinc Interface should start blinking once per second. If not, see Troubleshooting.
5. Plug in the powerline interface module which allows the HouseLinc Interface to send and receive X10 signals. The powerline interface module plugs into any standard AC out-

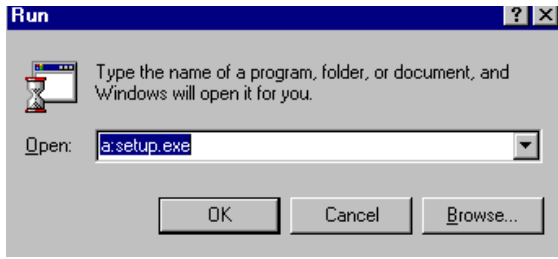
let. Note that many power strips with good surge suppressors can filter out X10 signals, so you should avoid plugging the powerline interface module into one.

6. Connect the powerline interface module to the HouseLinc Interface. The powerline interface module connects to the HouseLinc Interface using the standard telephone cable included with your HouseLinc unit. Clip one end of the cable into the bottom of the powerline interface module, and clip the other end into the port labeled "X10" on the HouseLinc Interface.
7. Install a 9V battery into the battery compartment on the bottom of HouseLinc (the unit will operate without the battery, but power outages will cause the unit to lose its date and time settings, you may need to pry open the battery compartment using a small screwdriver). The green status LED on the front of HouseLinc should stop blinking.

## **SmartLinc Suite Software Installation**

The SmartLinc Suite contains two setup software programs for HouseLinc (PlatoTW.exe and MHM.exe) and one setup program for TouchLinc (TOUHLINC.exe). Depending on what SmartLinc hardware you have, you may not need all the software packages contained in the Suite.

1. Boot your PC into Windows.
2. Insert the diskette labeled "SmartLinc Suite" into your floppy diskette drive.
3. Depending on operating system:
  - A) For Windows 95, click on the Start button and choose Run. Type A:SETUP.EXE in the dialog and click OK.
  - B) For Windows 3.x, Use the File menu from the Program Manager and choose Run. Type A:SETUP.EXE in the Command Line: and click OK.



4. Click Next to continue beyond the Welcome Screen.
5. Review the Readme information screen and then press Next to continue.
6. In the Choose Destination Location window, click on the next button to accept the default subdirectory (c:\smarthome) or change to another subdirectory if desired (if you had a previous version of Plato HouseLinc software, the suite installation program will find it and import your current configuration and you will also be instructed on how to import other pre-defined configurations).
7. In the Setup Type window click on the next button to accept the default installation of all three software packages. Click Custom if you wish to install only a subset of the packages.
8. In the Select Program Folder window click on the next button to accept the default program folder "SmartLinc Suite" or enter another name if desired.
9. In the Start Copying Files window click on the next button to begin the actual installation of files to your computer.
10. Insert Disk 2 and click OK when prompted.
11. Insert Disk 3 and click OK when prompted
12. In the Setup Complete Window click in the Yes checkbox if you wish to review installation notes.
13. Click Finish to complete the installation of the SmartLinc Suite.

## Running HouseLinc Software

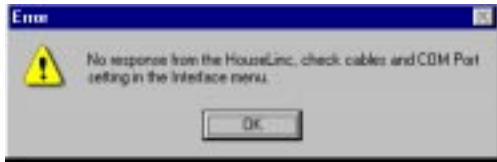
PlatoTW.exe is the setup and control software for HouseLinc. It is recommended that you launch PlatoTW.exe from within Multi-House-Manager.



MHM.exe (Multi-House-Manager) allows you to save setups for multiple homes (or create backup of an individual home's setup). The use of MHM is highly recommended for dealers (for multiple home purposes) as well as for individual homeowners (for backup purposes).

To Launch Multi-House-Manager

1. Press the Start Button
2. Click on Programs
3. Click on SmartLinc Suite (or other name you selected during Suite installation)
4. Click on Multi-House-Manager
5. The white, rectangular box in the middle of the MHM window will display all the "com" devices that MHM has found (e.g. HouseLinc found on COM1, Modem found on COM2). Clicking on this box will cause MHM to re-examine the com ports and update this information.
6. If you had a previous version of Multi-House-Manager installed:
  - MHM will load with your current setup called "Original"
  - a) Select Save As from the File menu to save the setup with a more descriptive name.
  - b) Select Import Config from the file menu to import your other MHM files from your previous installation subdirectory (probably c:\platotw) into your current subdirectory (probably c:\smartlinc).
7. Select Open Config from the File menu and select PLC-1184.MHM. This will launch PlatoTW.exe (the HouseLinc setup and control software) and instruct the software to establish communications with the HouseLinc controller..
8. If HouseLinc is not properly connected or if your HouseLinc is not on COM1, you will receive the following "No Response" message:



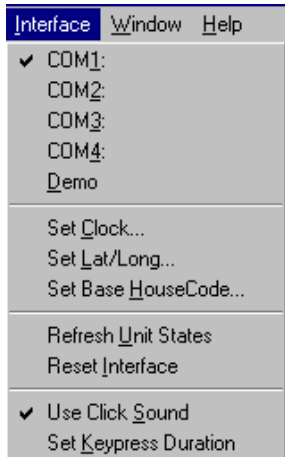
If you receive this message switch back to MHM and referring to the white box in the middle of the MHM window, confirm which COM port HouseLinc is connected to.

If MHM does not report HouseLinc on any COM ports:

You have a connection problem. Check cables and refer back to the "HouseLinc Hardware Installation" section of this manual. (You may need to "reset" HouseLinc - to do so, remove the 9V battery and unplug the 12V power supply for a few seconds. This completely resets HouseLinc).

If HouseLinc's COM port is listed:

Switch back to Plato HouseLinc and select the correct COM port from the Interface menu.



9. You may also receive a message that the battery needs replacement. This is simply a warning message. HouseLinc will operate properly without the battery. However, if a power outage should occur, all your device and event programming will remain in tact but HouseLinc's clock will lose its correct settings.

10. You might also receive a message that the powerline inter-

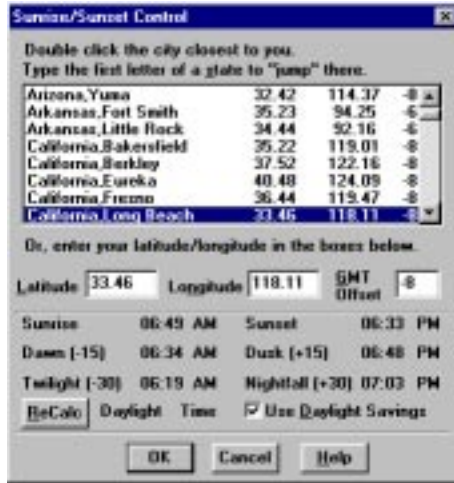
face was not connected (the software may refer to the powerline interface as a TW-523). If you receive this message, confirm that the powerline interface connections are properly established and that the powerline interface is plugged into a live outlet.

11. Setting the HouseLinc clock: In order for timer events to occur accurately you will need to set HouseLinc's internal clock. Select Set Clock from the Interface menu.



Click on the button just below "Sync with system clock" with the time and date (which has been copied from your computer's clock) to synchronize HouseLinc with your PC's clock (alternately, you may enter the time in the box above the "Sync" button).

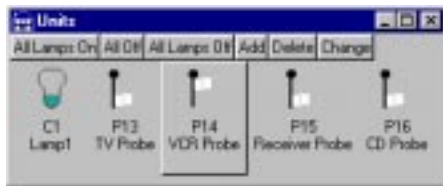
12. Specifying your Latitude and Longitude: Plato-HouseLinc needs your Latitude and Longitude to calculate sunrise and sunset times throughout the year. Select Set Lat/Long... from the Interface menu.



- a) Use the listbox to select the city nearest you.
  - b) Click on the ReCalc button to recalculate the sunrise/sunset table.
  - c) Select Download sunrise/sunset table from the Interface menu to download the accurate data to HouseLinc.
13. Your first time installation is complete!

## Setting up X-10 Devices

1. Select the Units Window. Upon starting the software for the first time several default windows should be open. The window titled "Units" is the window that contains the X-10 compatible devices. When launching the HouseLinc software for the first time, the X-10 devices which are defined at the factory will be listed:



A lamp on the X-10 address C-1 is listed. Also, four "flags"

that correspond to the On/Off status of home theater devices are defined on P13-P16 (use SmartLinc's ProbeLincs to detect the On/Off status of these devices).

2. To turn on the lamp on C1 (assumes you have a lamp plugged into a lamp module set to C1 or an X-10 compatible switch set to C1) double-click on the lamp icon. The icon will change to look like an "ON" bulb and your light should turn on. By double-clicking again the light and icon should turn back off (note: the flags are logicals and cannot be controlled in this manner).
3. Setting up a new X-10 device is very simple. For example, to add a lamp at the address of C2 simply click on the Add button in the Units window. Then:
  - a) Click on the housecode for your device (C)
  - b) Click on the unit code for your device (2)
  - c) Select On/Off icons from the "Type" scroll list (e.g. desk lamp)
  - d) Enter a description for the device (e.g. Office)
  - e) For now, you can ignore or erase the information in the location window
  - f) If your device supports preset dim commands, you can select the PCS or Preset Dim option
  - g) Click OK - It's that simple!



3. To change (edit) an X-10 device simply click in the Units window.

4. To delete an X-10 device simply click on delete in the Units window.

## Setting up Infrared Devices

*Note: You will need to setup your infrared devices even if you previously programmed them using the temporary programming cable provided in a SmartLinc Home Theater Kit.*

1. Open the IR Devices window. If it is not visible, it may be minimized (in which case you can either resize it or select it from the Windows pull down menu (item #3). If it is not available from the Windows pull down menu, the software has not identified the connected HouseLinc as being infrared “ready”. Check to ensure that you are not running in demo mode. If you are, you may need to restart the software. If you have successfully connected to the HouseLinc, restart the software. If the IR Devices window is still unavailable contact technical support at 949-221-0480 x157.



2. Initially, you should have 4 sample IR devices previously defined (see image above). **IMPORTANT:** These devices are used in events that have been predefined at the factory to make your installation and enjoyment of home theater and A/V control easier. **DO NOT DELETE THE SAMPLE IR DEVICES** before becoming fully familiar with HouseLinc and determining that you do not need them. It is recommended that you follow the instructions below (either for a device type not included in one of the three samples or for a “test” device), then click on the change button to modify the settings for the sample items so that you may make use of predefined events.
3. To configure HouseLinc to control your IR device (e.g. TV)

- a) Click on the TV icon
- b) Click on Change
- c) Click on the Type tab
- d) Select the proper manufacturer for your TV from the drop down list labeled “Select the manufacturer...”
- e) Click on the Code tab (and the following window will appear):



- f) A small window with a 3 digit code will appear in the upper left hand side of the screen.
- g) Click on the Setup button - the 3 digit code (which controls devices made by the manufacturer of your device will be programmed into HouseLinc (and you should receive) a “Device Setup Successful” message.
- h) Click on the Test tab
- i) Make sure that you have a clear line of sight between the front panel of HouseLinc and your IR device (TV) (or that you have installed an IR emitter)
- j) Click on the power (PWR) button to test the configuration (or other button like channel + if you are trying to operate a cable box or other device that does not respond to power).
- k) If you have selected the correct 3 digit code for your device (TV) it should turn on.
- l) If your device does not turn on (or if you receive an error message, click on the Code button, select the

next 3 digit code from the drop down list and return to step g).

m) If you have tried all the 3 digit codes listed and none have worked call technical support. There is a good chance that they will be able to instruct you to try a different code already contained on your HouseLinc's IR chip or may be able to provide you with a chip which has been upgraded for your device.

n) To configure the VCR, Receiver and CD Player for your devices, start again from step a (and click on the corresponding icon) for those devices.

To set up a new IR Device click on Add in the IR Devices window:

1. An IR Device Setup Wizard will walk you through setting up an IR Device.



2. Click Next to begin.
3. From the top drop down list select a type of device (note many "receivers" are listed in the Tuner section).





4. From the bottom drop down list select a manufacturer.
5. Click Next
6. Select the output ports for the IR Device you are adding. HouseLinc will “send” infrared control codes out any and all ports that you select during this step. The default is all ports. You only need to change this if you will be installing a “zoned” infrared control system. By zoning you can have multiple devices from the same manufacturer (even the same model) and control them separately. For example, if you have two Sony TVs, you may wish to place the first Sony TV on port 1 and the second Sony TV on port 2. This will allow you to turn the first on or adjust its volume without affecting someone watching the second Sony TV.



7. Click Next



8. Next, the Wizard will walk you through finding the proper three digit “setup code” for your IR Device. By dropping down the list of codes you can determine how many codes there are for the manufacturer of your type of device (7 for the example of Sony TVs). The easiest method of determining the proper code is to use the top “Setup” button.
- Click on the drop down list of codes
  - Click on the code to test (1st code on the list for your first attempt)
  - Click on the top Setup button
  - The setup code chosen in the drop down list will be sent to HouseLinc
  - The message “saying device setup successful” will appear.
  - Click OK
  - Click Next
  - A “virtual” test keypad will appear



- i) Click on the PWR button (if your device doesn't have an PWR button, press a key that is defined - e.g. channel up for a cable box.)
- j) If your IR Device responds, you've probably got the correct setup code, try a couple of other buttons to confirm and skip to step 9.
- k) Otherwise, you need to select try the next setup code. Return to step a in this sequence.

9. Click on Next



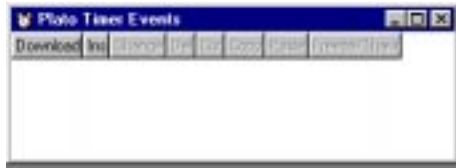
- 10. Chose icon, description and location for device
- 11. Click on Finish
- 12. Setup for this device is Complete!

To delete an IR Device click on delete in the IR Device window.

# Setting Up Timer Events

Example: Program HouseLinc to turn on the C1 lamp at sunset each evening.

1. Open the Timer Event Window (either by maximizing the minimized Timer Event Window or by selecting it from the Windows drop down menu).



2. Click on Insert to create a new timer event

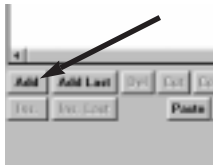


*The window that appears is the HouseLinc programming window. A similar window will be used to setup and modify almost all HouseLinc events. The top portion of the window is used for the event "trigger", which in this case is time of day. The large window in the middle of the screen will contain the steps of the event. The remainder of the screen will be used to program the event.*

3. Click on the Time drop-down list.



4. Click on Sunset (if you had wished to have the event occur at a fixed time each day, you would have left time of day in the time window and selected the hour, minute and am/pm that you wished the event to occur).
5. Click on the Add button on the middle left side of the screen



6. Choose X-10 from the list (*This tells HouseLinc that you want to add an X-10 command to your event. If you had desired, you could have added a scene (a predefined list of commands which could contain X-10, Infrared or both), a command group (a special type of scene) or IR output.*)
7. Click on the wide drop-down list at the middle of the screen. All X-10 devices that have been set up in the Units window will appear here.



8. Select C1 Lamp 1 (*You may also click on the house code and unit code for a device if you prefer*)  
The address (C1) will fill in automatically  
*If you had wished to add another command to this event you would simply click on the Add button again and proceed from step 5.*
9. Click on the Radio button next to the white box below "Description of Commands"

10. Type a "title" for your event into the white box (e.g. Sunset Lighting)
11. Click Done, You're Finished!
12. Your Timer event window should look like this:



*(For each event you define, the left hand side of the label describes the trigger (in this case sunset) and the right side contains the title you've given the event (in this case Sunset Lighting). You can use the buttons just above the list of events to download your programming to HouseLinc (this is required for any timer and X-10 Input events) or to copy, paste or change your events.*

## Adding Qualifiers to Events

Example: Have the sunset lighting scene just described happen only on weekdays.

1. Click on the Change button in the Timer Events Window.
2. Click on the Add Qual button near the middle of the window (to add a "qualifier" to your timer event - this qualifier will make your event conditional on whatever qualifiers you add)
3. Select Days/Months from the qualifier drop down list
 

*The types of qualifiers include:*

  - a) *Days/Month: Will only run event on the selected days of week or months of the year*
  - b) *X10 Unit states: Will only run event if the X10 device selected is in the selected "state" (e.g. only turn on the bathroom fan if the bathroom light is already on)*
  - c) *Time Range: Will only run event if time of day is within selected range (e.g. only turn on the fountain if it is between 9:00 am and 5:00 pm)*
  - d) *Freeze: Temporarily freezes the event line currently highlighted.*
  - e) *Delay: Tells HouseLinc to wait the desire amount of time (5 seconds to 1 hour) before performing the*

*command line which is being qualified - note:  
(HouseLinc will continue to monitor and execute other  
events during this delay period)*

4. Click on M-F (which stands for Monday thru Friday near the left hand edge of the window)

*Notes on Qualifiers:*

*a) You can add one of each type of qualifiers to each command line in an event. A small tab at the bottom of the event window will grant you quick access to all qualifiers that have been added for the event.*

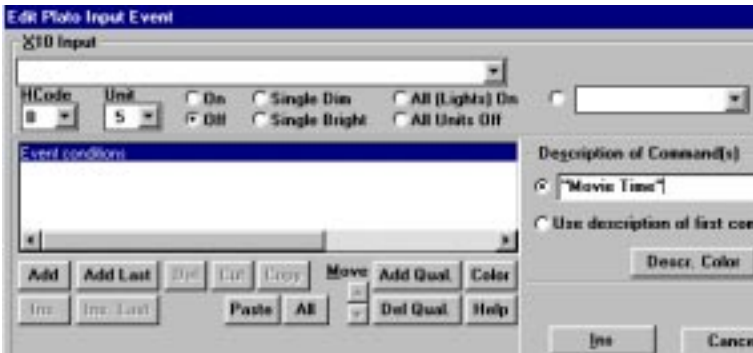
*b) If you wish the entire event to be qualified (assuming you had more than one command line in the event) add the qualifier to the first line in the command window (that line is always titled "Event Conditions").*

*c) In order for any events to run automatically, they must be downloaded. (Simply click download from any event window to download your latest event programming).*

## **Setting Up X-10 "Input" Events**

Example: Press Play on the VCR and turn C1 lamp on if HouseLinc receives a B5 OFF.

1. Open the Plato Input Events window (either by resizing it from a minimized version at the bottom of the screen or by selecting it from the Windows drop-down menu).
2. Click on Insert to add a new event.
3. A window that looks very similar to the timer event will appear. The primary difference is that instead of timer related options at the top of the screen, X-10 "input" options will appear.



4. Click on the HCode drop-down list and select B.
5. Click on the Unit drop-down list and select 5.
6. Click on OFF
7. Click on the Radio Button under “Description of Commands”
8. Type in a “title” for the event “Movie Time”
9. Click on the Add button on the middle left of the screen.
10. Select IR Output (a “virtual remote” will appear)
11. Select the VCR from the drop-down list in the lower center portion of the screen



12. Click on the Add button just to the left of the numeral 1 in the IR keypad (this will add up to 7 IR outputs to the single command line you are creating)
13. Click on the button labeled “PLAY”  
*Note that the selection of the VCR and Play will appear in the “window” to the left hand portion of the screen. Each “line” of IR code in HouseLinc events can hold up to 7 total IR commands. Once you have chosen the IR device you wish to control, you can continue to add new IR commands for that device (even if it means adding another “line” to your event).*
14. Your event window should look like this:





*Note: There are 2 “lines” in the IR event window. The first puts HouseLinc into “VCR mode” (this puts the IR control chip into VCR mode, just like pressing the VCR mode key on a universal remote control). The second sends a play (just like pressing play on your VCR’s remote control).*

15. Click on Add (middle left hand side of window) to add the X-10 portion of this Event.
16. Click on X-10 Command
17. Click on C and 1 (or choose the C1 lamp from the drop down list).
18. Click on the On button just to the right of the units window (near the Dim button).
20. Click on Done, You’re Finished!

*Notes: Input events must be triggered by incoming X-10 signals. (e.g. you cannot trigger the event by transmitting the X-10 trigger out of HouseLinc). To keep your input events organized you may wish to keep them alphabetized. To “move” an input event, click on the event then click on the Up and/or Down buttons to move it up or down as required.*

## Setting up Command Groups and Scenes

Scenes and command groups are “re-usable” events. They can be embedded within multiple timer and X-10 input events. For exam-

ple, you may wish to create an event that makes sure all your home theater equipment is off and then embed that logic into events like goodnight, goodbye and vacation. Command groups are identical to scenes with the following two exceptions:

- 1) Command groups can be embedded in other command groups and/or scenes (whereas a scene can only be embedded within a timer event or X-10 input event).
- 2) You cannot assign an icon to a command group.

Example: Create an event that makes sure all home theater equipment is off.

1. Open the Scenes and Command Group window (either by resizing it from a minimized version at the bottom of the screen or by selecting it from the Windows drop-down menu).



*One icon that “contains” all the Command Groups will be present in this window (even if there are no Command Groups defined). One icon for each scene will also be displayed in this window (e.g. ABC, CBS, etc.)*

2. Click on the Command Group Icon.
3. Click on the change button (this will allow you to change the Command Group Settings).



4. Click on New.
5. Type a "title" for the event into the Description window (in this case type in ("All IR OFF").
6. Click on the Add button (left center of window).
7. Select IR Output.
8. Select TV from the IR device window in the lower right hand side of the window.
9. Click on the Add button near the center of the screen (next to the 1 in the "virtual remote")
10. Click on the PWR (power) button



*Your IR event window should look like the image above (step 1 puts HouseLinc into TV mode, step 2 sends a power button). But you only want the power button to be sent if the TV is already on, so you'll need to add a qualifier.*

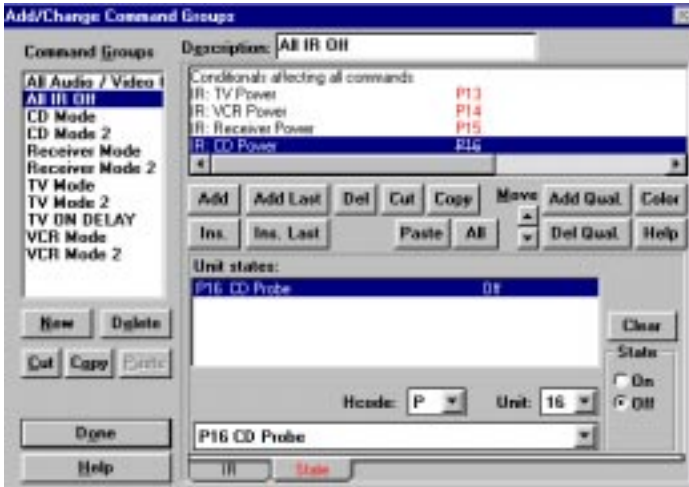
11. Click on Add Qual.
12. Select X-10 Unit States.
13. Click on the drop down box at the bottom center of the window



*A list of all previously defined X-10 devices will appear (including flags corresponding to on/off status of ProbeLincs)*

14. Click on P13 TV Probe
15. (Make sure that ON is selected under "State") This means that the event will only occur if P13 is ON (e.g. the TV is On). *You have now made sure that the TV is off, next repeat for the VCR.*
16. Click Add (middle left side of window)
17. Select IR Output
18. Select VCR from the IR devices drop down list (lower right corner of window)
19. Click Add (middle of window)
20. Click PWR
21. Click Add Qual.
22. Click X-10 Unit States
23. Click on the drop down box at the bottom center of the window.
24. Click on P14 VCR Probe
25. (Make sure that ON is selected under "State")
26. Repeat steps 16-25 for the Receiver and CD Player (note: you may need to select the "OFF" state for your CD player as many CD Players have status lights that are On when the CD Player is OFF).

*Your window should look like:*



27. Click Done to complete the programming of your “All IR Off” command group.
28. Your “All IR Off” command group should be functionally identical to a command group titled “All Audio/Video Off” which was programmed at the factory.
29. If you wish, you can delete your “All IR Off” command group by highlighting it in the Command Groups window and clicking on Delete.

*Notes:*

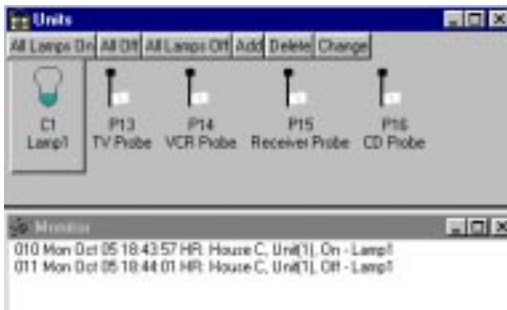
*Hardwired installations (using RS-232 touchscreens or other controllers) trigger scenes only. Given the fact that command groups are more flexible (can be embedded within scenes) they are the preferred “reusable events”. The preceding example could have also been achieved by creating a scene with the only significant difference being that you would have needed to choose an icon to accompany the scene.*

*Hopefully, you now feel a little familiar with HouseLinc events. Simply edit “Change” the other input events, scenes and command groups to get a feeling for at least one method of creating “automated control” events for home theater*

*applications. Use copy and paste then change to make adding new events easier.*

## Using the Monitor Window

1. Open the Monitor and Units windows and resize them so they both can be seen on your screen.
2. Double click on the C1 Lamp 1 icon to turn it on.
3. Double click on the icon again to turn it off.
4. The commands that were sent (C1 ON and C1 OFF) will appear in the Monitor window. Monitoring activity can be helpful in debugging your installation. Click on the Options drop-down menu to set the options (e.g. seeing more detailed activity reports) for the Monitor window (the options drop-down is only available if the Monitor window is active).



5. If you wish to “record” all the X-10 and IR traffic, select Open Log from the File menu (this option is only available if you have the Monitor window highlighted). This will record all information from the monitor window into an ascii file on your hard-drive.

## Adding a Blueprint or scanned room image

1. Bitmaps (either created in a graphical edit program such as Paintbrush or scanned in from a photograph) can be imported into HouseLinc. Note: If you are importing numerous

bitmaps, create the bitmaps using 256 color or less. Then icons for devices and scenes can be “dropped” onto these house images for “virtual” control of the devices.

2. Click on the File drop-down and select Open Blueprint.
3. Enter the filename and path for your bitmap file.
4. Press OK
5. Enter a name for your blueprint (e.g. Living Room), this is the name that will appear within HouseLine. Also, select Main Blueprint if this is the main view of the home.
6. Click on Add to add a device, event or link (a visual shortcut to another blueprint)
7. Click on Link in the Item window
8. Click on the blueprint to link to.
9. Add a name (a label that will appear in the link button)
10. You're Done. Note: Executing any of the “All” commands from within the blueprint view will affect all the X-10 devices in the view regardless of their housecode.

**SMARTLINC**   
*"...linking you to a smarter home"*

© Copyright 1997-1999, SmartLinc  
17201 Daimler Street  
Irvine, CA 92614  
(main) 949.221.0480  
(fax) 949.221.0488  
web: [www.smartlinc.com](http://www.smartlinc.com)  
email: [inbox@smartlinc.com](mailto:inbox@smartlinc.com)

2/99 SL95

**Smarthome.com, Inc. (800) SMART-HOME (949) 221-9200**  
**<http://smarthome.com>**