

WeMo Light Switch Guide

Choosing a home security system can seem overwhelming but it needn't be that way.

IMPORTANT: Use a **non-contact voltage detector** or flip the light switch a few times to make sure the power is off.

1. Install the switch to your electrical line.
2. Set up the switch in the intuitive WeMo App.

First thing's first with the physical installation...

1) Installing the WeMo Light Switch to your electrical line

If you're confident with basic electrics, setting up your WeMo Light Switch takes just a few minutes.

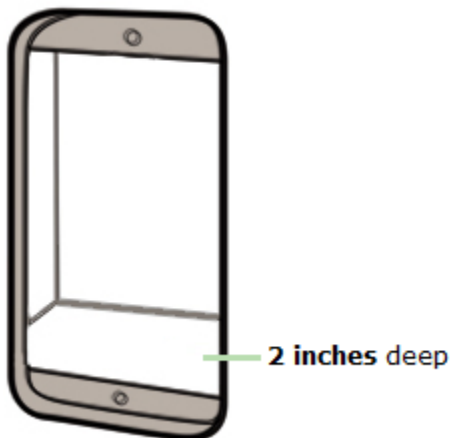
If you're not absolutely at ease with electrics, call in a professional electrician.

Before installing the WeMo Switch to your electrical line, make sure the following are in place:

- A neutral wire with 3 AC electrical connections at the switch.



- Make sure the light switch box is 2 inches deep.



NOTE: The WeMo Light Switch will not work with metal faceplates. These will interfere with the Wi-Fi signal.

Use the Wemo Smart Light Switch for dry, indoor residential applications only.

If your smart home meets the above electrical requirements, here's what you do next:

Step 1

Turn off the power at the circuit breaker for the switch you're replacing. You might need to shut off more than one circuit breaker to ensure the switch you're working on is off.

IMPORTANT : Use a **non-contact voltage detector** or flip the light switch a few times to make sure the power is off.

Step 2

Unscrew and disconnect the wires from your old switch with a screwdriver.

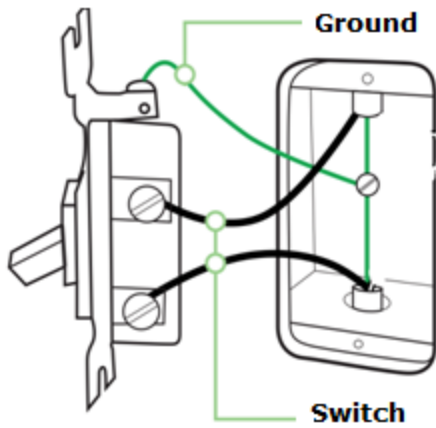
Step 3

Identify the wires on your WeMo Light Switch:

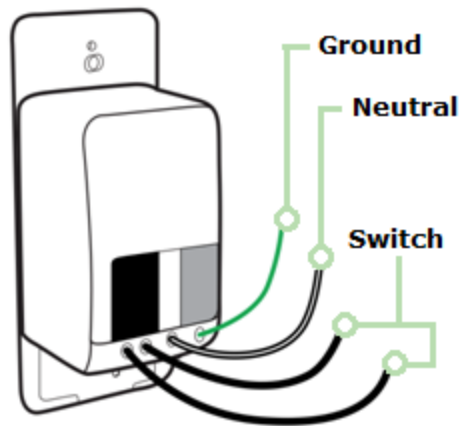
- **Switch (Live/Load) Wires** - These are the two black or red wires.
- **Neutral Wire** - If present, the neutral wire is usually found in the wall box. It comes with a wire nut on top.
- **Ground Wire** - If present, this wire should be plugged into the top of the light switch here. It will be green or copper. WeMo Light Switch doesn't call for a ground wire, so if there's not one in place, it's no problem.

Warning: The following wiring scenarios might be dangerous or even illegal:

Don't install if the **Neutral** wire is not available.



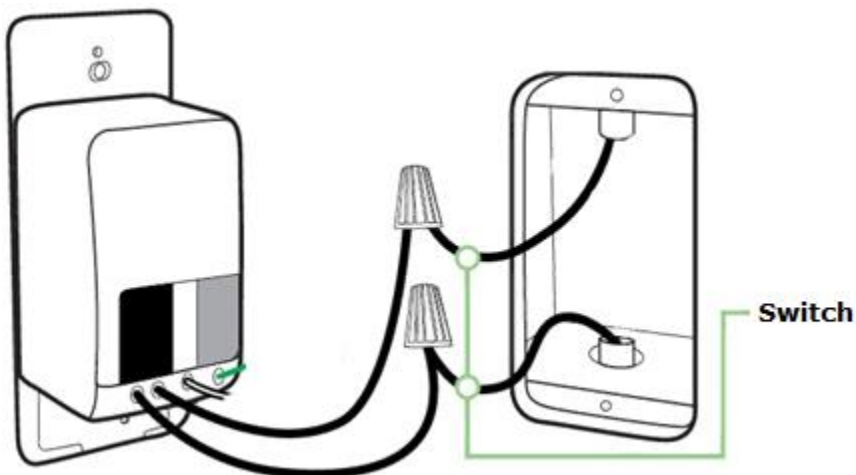
Never connect the **Neutral** wire to any **Switch** wires.



Step 4

Install your WeMo Light Switch by connecting each of the **two black wires** to the **switch (live/load) wires**.

If there's more than **one** wire, place all wires into the wire nut. This is a cap-like object connecting the cables.

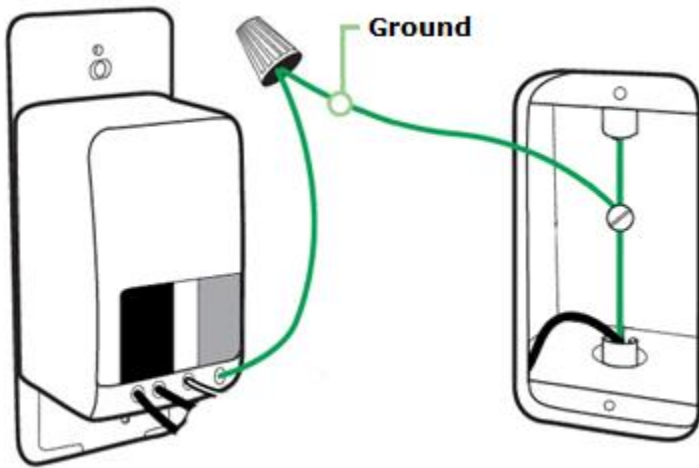


Step 5

Unscrew the **wire nut** holding together the **neutral wires**.

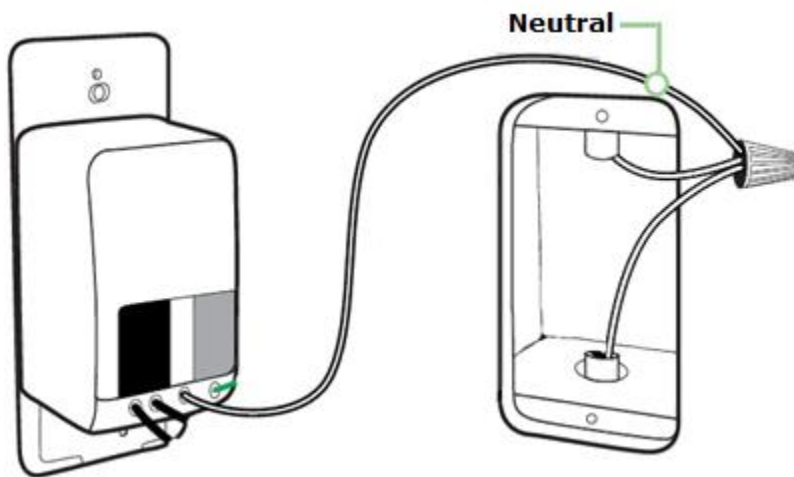
Connect the **white wire** from your WeMo Light Switch to the outlet's exposed **neutral wires**. Securely screw them together inside the **wire nut**.

IMPORTANT: Wrap electrical tape around these wire nuts to make sure the copper conductor is wholly concealed.



Step 6

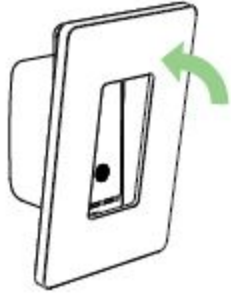
If you have an optional **ground wire**, disconnect it from the old switch and hook it up to the green wire on your WeMo Switch.



Step 7

Screw in your WeMo Light Switch and attach the faceplate.

Push the wires back into the wall box, leaving as much space as you can for the switch. Align the **two** screw terminals then screw in the WeMo Switch. Finally, attach the faceplate.



Step 8

Turn the power back **ON** at the circuit breaker. To check that installation worked, manually switch it on.

Your WeMo Light Switch is now installed to your electrical line.

How about setting things up in-app?

2) Set up the WeMo Light Switch with the WeMo App

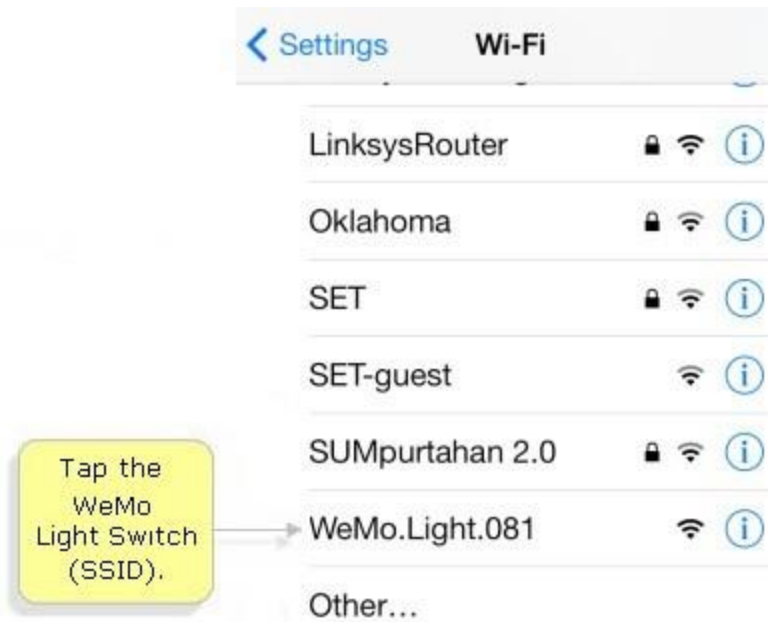
First, make sure that:

- Your WeMo Light Switch is installed to your electrical line and fully functional.
- You have a Wi-Fi router and an active Internet connection. Make sure you know the wireless network name (SSID) and password of your router.
- You have a mobile device with the WeMo App in place. You'll need an iPhone / iPad / iPod Touch or ^[1]an Android device (4.0 or later).

NOTE: Download the WeMo App in the Apple App Store for iOS devices or Google Play Store for Android.

Step 1

Enable Wi-Fi on your mobile device. Look for the wireless network name (SSID) of the WeMo Light Switch (**WeMo.Light.xxx**) and tap to connect your device.



Wait until you connect to the WeMo Light Switch network. A successful connection indicates a check mark beside the WeMo Light Switch (SSID).

Step 2

Launch the **WeMo App**.

Step 3

Tap your router's **wireless network name** (SSID) then enter the **password**.

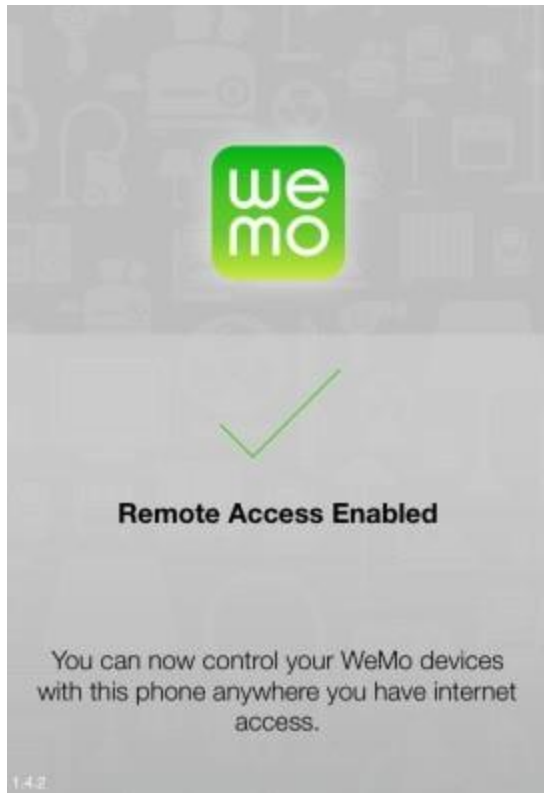
NOTE: WeMo can only connect to a 2.4 GHz network, with the correct wireless settings. It doesn't work with 5GHz.



Wait while the WeMo App connects. If there's a lag, refresh your mobile device's Wi-Fi, then try again.



A **Remote Access Enabled** message will pop up. This feature enables by default.



Step 4

When setup is complete, hit Done.

NOTE: You can easily customize the **Name**, **Device Icon**, and **Email** of your switch. **Enable Remember Wi-Fi Settings** option so the app will connect automatically to your wireless network once in range.

Setup Successful

Consider giving this switch a memorable name (and icon) to easily remember what it is in the future.

Name WeMo Light Switch

Device Icon 

Email (Optional)

Receive important Belkin updates and other product-related information.

Remember Wi-Fi Settings

Makes future WeMo device set-ups a lot easier.

Done



The WeMo App will then refresh and look for devices before automatically detecting your WeMo Light Switch.



You have now installed the WeMo Light Switch in-app.^[1]

You can create different rules for your switch in-app.

Now get experimenting and enjoy the automated experience!